



LED

Uplighter

WALL MOUNTING SYSTEM.

With its innovative design, the LED-Uplighter is recommended for use in homes, offices, shops and restaurants. The LED-Uplighter is constructed in such a way that the UV-A light is directed upwards.

INSECT CONTROL UNIT



Energy saving & effective control go hand in hand



LED-Uplighter wall mounting system.

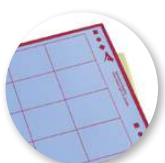
With its discreet design, the LED-Uplighter is recommended for use in shops and restaurants and dry industrial environments..

Easy to service, stylish and effective; the LED-Uplighter offers it all.



LED lamps

LED technology offers clear advantages in terms of efficiency (lower energy consumption) and its footprint (compactness)



Glue boards

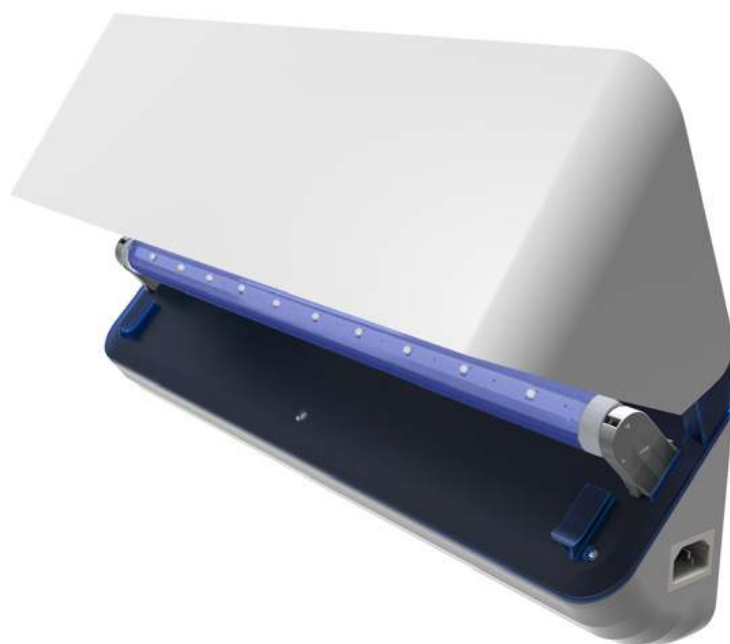
Insects are caught on a glue layer, which preserves them over time. The caught insects can be counted and insect species can be analysed, which offers clear advantages in an IPM approach.

10 reasons to start using the LED-Uplighter:

- Effective & proven design
- Energy saving UV-A LED technology offers over 45 kW of savings per unit per year.
- 3 year lifespan (25.000 hrs) of the UV-A LED lamp
- Environmental friendly: no restricted chemicals used in the product design.
- RoHS / REACH / ISO and CB compliant
- Fast and simple maintenance of the unit.
- Optimized glue board offers fast catch results and a fast analysis
- 2 years of guarantee
- High quality casing offers over 5 years of operational use
- Fast mounting and fast service

Technical specifications

Area coverage	: 30-50 m ²
Light source	: 1x 15 Watt Astron UV-A LED lamp
Type of UV lamps	: UV LED Lamps RoHS certified
Electrical supply	: 100-240V ~ 50-60 Hz
Catch specifications	: By means of long life glue board
Power consumption	: 11.5 W
Weight	: 2 Kg
Degree of protection	: IP 20 (drip proof)
Guarantee	: 2 year return to base
Int. building norm	: acc. IEC-335-259 int. standard
Lamp life time	: 25.000 hrs (*)
Dimensions (L x D x H)	: 494 x 147 x 165 mm
CE-approval	: Yes
Mounting position	: Wall mounted
Cable	: Included
Packaging	: Full color box included
Manual	: Enclosed with the unit in English
Service	: Unit can be dismantled without special tools



(*) after 25.000 hours a loss of 30% in efficiency has to be expected and lamps need to be replaced